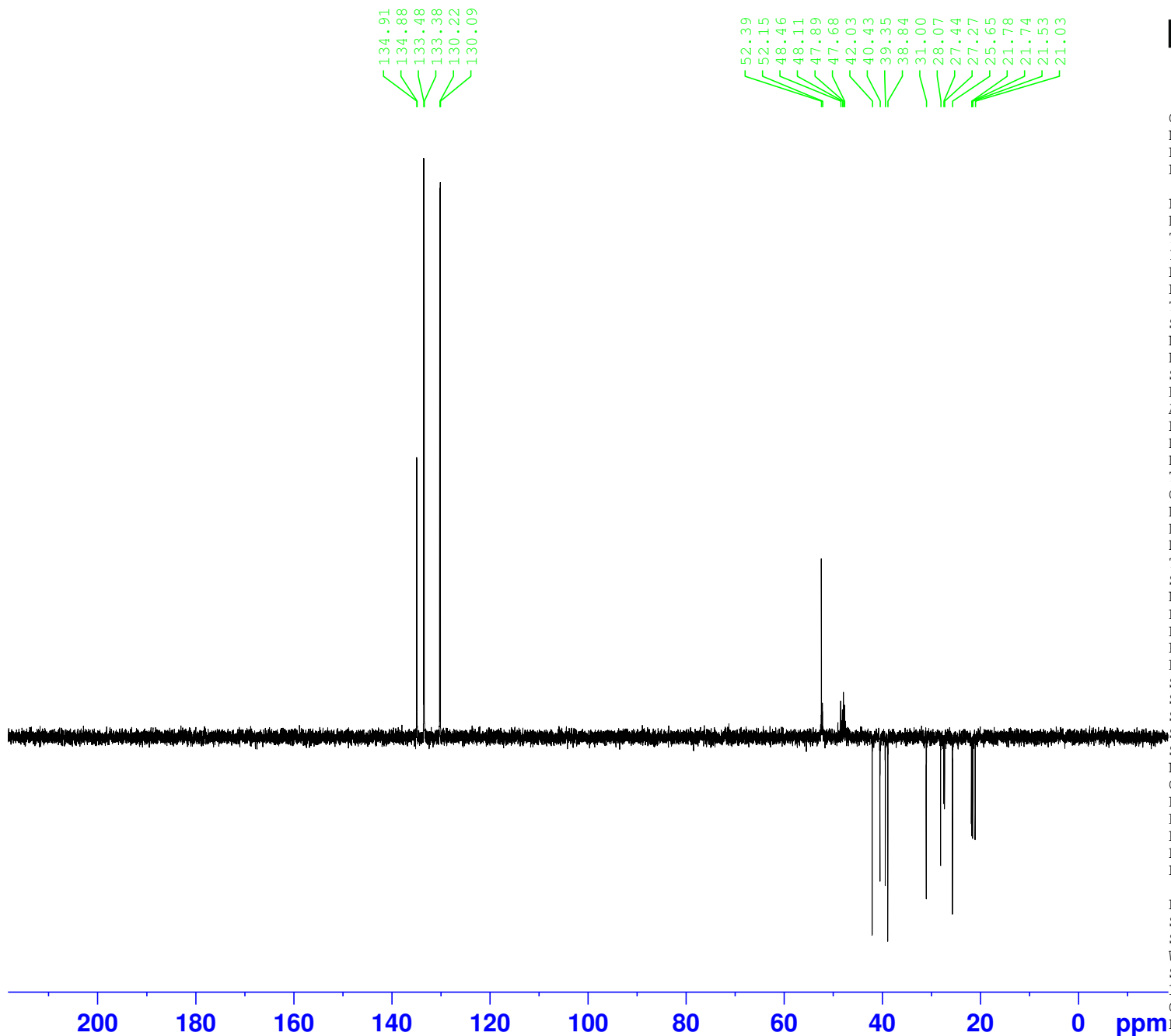


SC-15-84P



Current Data Parameters
NAME SC-15-84P
EXPNO 12
PROCNO 1

F2 - Acquisition Parameters
Date_ 20240420
Time 14.22 h
INSTRUM spect
PROBHD Z116098_0527 (
PULPROG deptsp135.b
TD 119044
SOLVENT MeOD
NS 1024
DS 4
SWH 23809.523 Hz
FIDRES 0.400012 Hz
AQ 2.4999239 sec
RG 212.93
DW 21.000 usec
DE 8.69 usec
TE 298.1 K
CNST2 145.0000000
D1 1.00000000 sec
D2 0.00344828 sec
D12 0.00002000 sec
TD0 1
SFO1 100.6479756 MHz
NUC1 13C
P1 9.78 usec
P13 2000.00 usec
PLW0 0 W
PLW1 80.98200226 W
SPNAM[5] Crp60comp.4
SPOAL5 0.500
SPOFFS5 0 Hz
SPW5 11.83500004 W
SFO2 400.2316009 MHz
NUC2 1H
CPDPRG[2] waltz64
P3 9.72 usec
P4 19.44 usec
PCPD2 90.00 usec
PLW2 16.02700043 W
PLW12 0.18694000 W

F2 - Processing parameters
SI 131072
SF 100.6379135 MHz
WDW EM
SSB 0
LB 1.00 Hz
GB 0
PC 1.40